

# 1841 Farm House



- 3 bedrooms, expandable to 5 bedrooms.
- 2 and a half bathrooms, expandable to 3.5.
- Large basement area.
- Two car attached garage.
- First floor laundry room
- Covered rear porch and side entry porch.
- Walk-out basement with 4 large windows.
- Two masonry fireplaces.
- Simulated Divided Lite wood windows.
- Watertable with molded shape brick.
- Flemish bond brickwork with white mortar.
- Authentic period styling.
- Brick walks and steps.
- Faux stone foundation veneer.



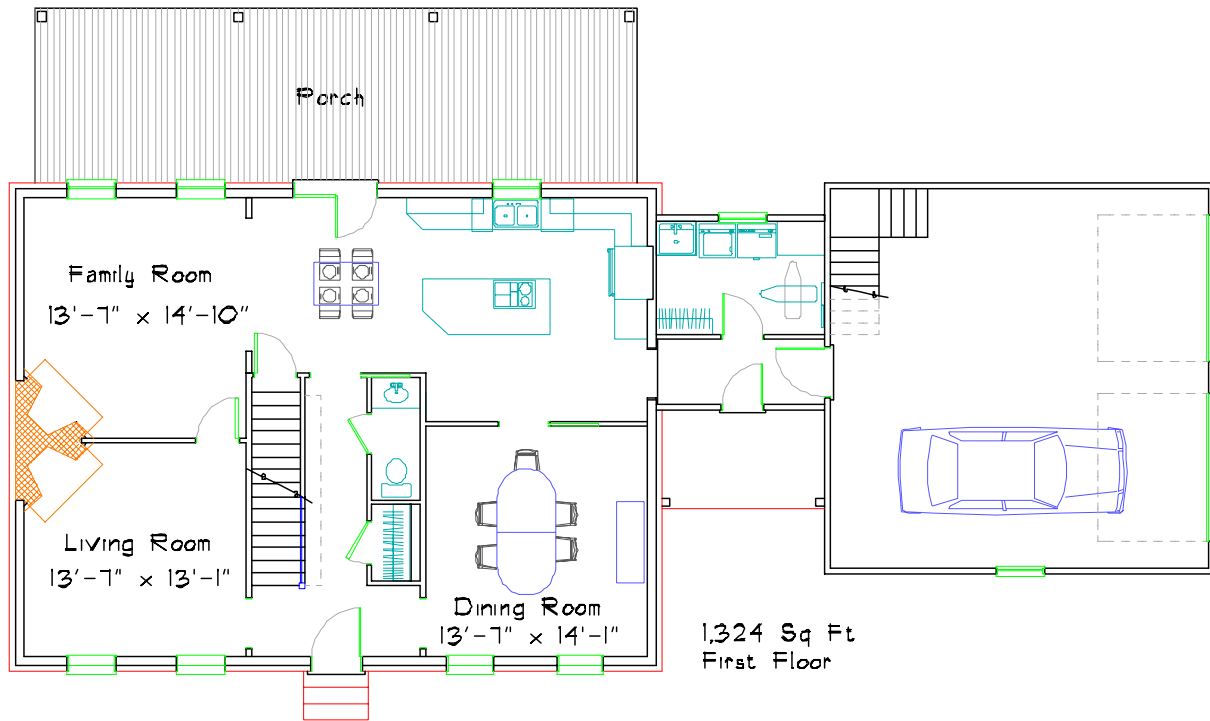
**JERRY HORN CONSTRUCTION**

COMMERCIAL • INDUSTRIAL • RESIDENTIAL

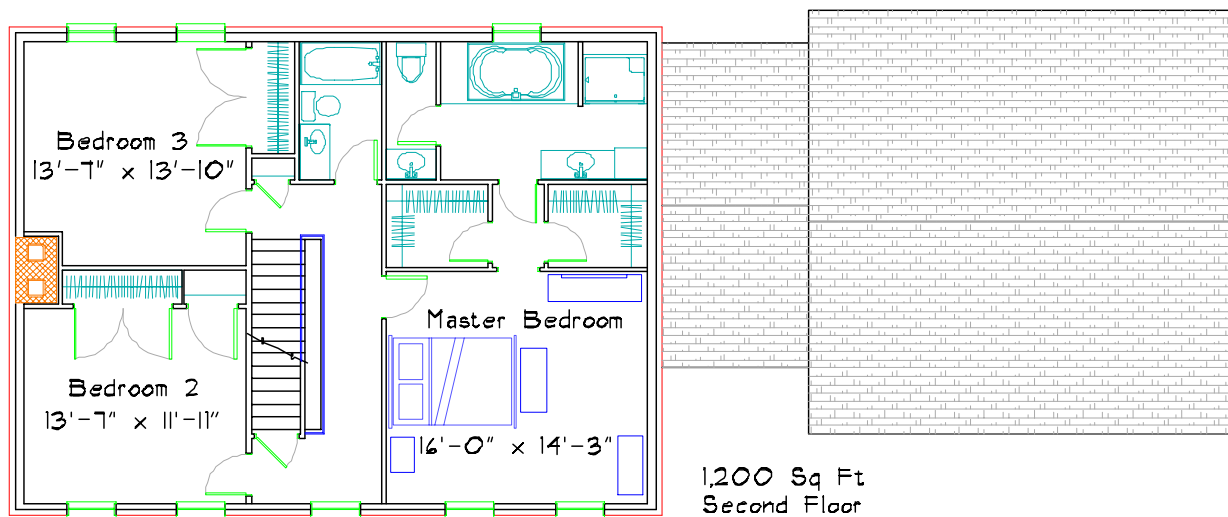
Call Don Horn at (724) 443-2090 or [donhorn@consolidated.net](mailto:donhorn@consolidated.net)



**DON HORN**  
Housewright



## 1841 Farm House



This plan has 2,524 square feet of finished living space and was designed by Don Horn as a custom home. Finishing the basement would add at least 1,000 square feet and adding 2 bedrooms and a bathroom on the 3rd floor would add at least 800 square feet. This plan can be modified to suit your needs.