

Belmont



- Four bedrooms, expandable to six.
- Three bathrooms, expandable to four.
- Large walk-up attic, ready for two more bedrooms and another bathroom.
- Three-car attached garage.
- First floor laundry room
- Rear sunroom and covered porch.
- Large entry hall extends front to back with grand staircase with mahogany handrail, elliptical arch, and pedimented overdoors.
- Library with full raised-hip paneling.
- Two covered front porches with brick and mahogany porch decks.
- Simulated Divided Lite windows.
- Operating window shutters.
- Detailed brick chimneys with molded shape brick.
- Watertable with molded shape brick.
- Flemish bond brickwork with white mortar.
- Authentic Williamsburg details and color scheme.
- Brick walks, patio and steps.



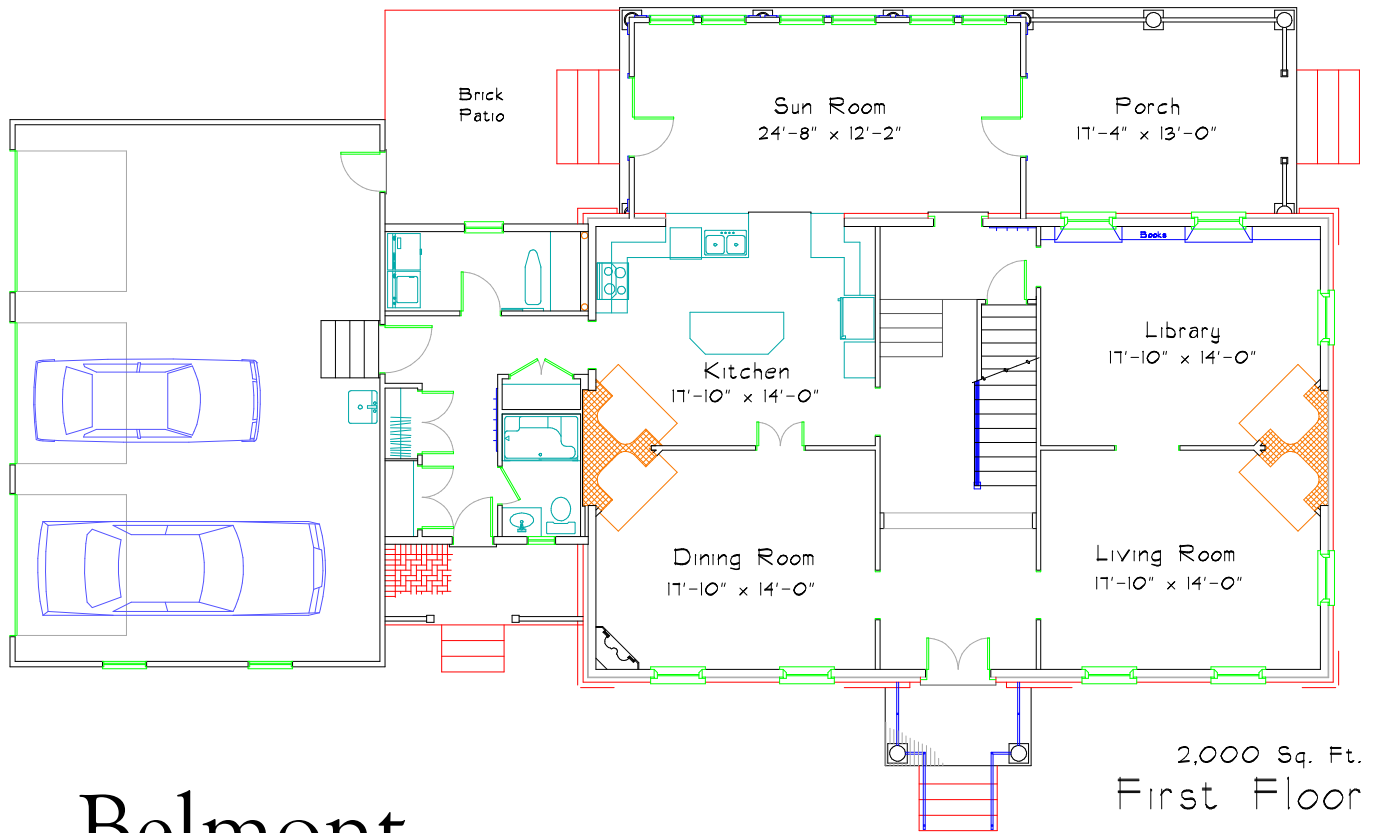
JERRY HORN CONSTRUCTION

COMMERCIAL • INDUSTRIAL • RESIDENTIAL

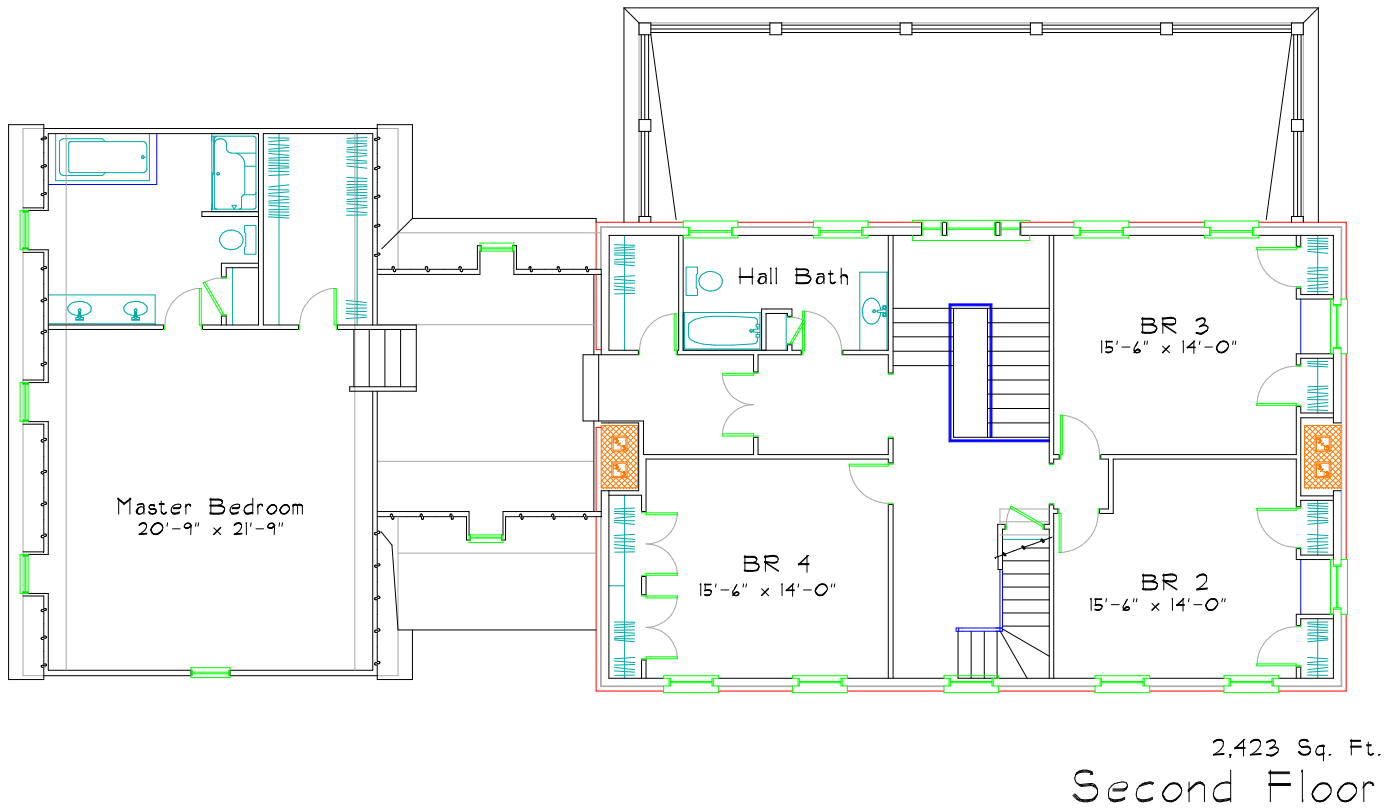
Call Don Horn at (724) 443-2090 or donhorn@consolidated.net



DON HORN
Housewright



Belmont



This plan has 4,423 square feet of finished living space and was designed by Don Horn as a custom home. Finishing the basement and third floor would add 2,275 square feet. This plan can be modified to suit your needs.

Details at Belmont



Rear porch with mahogany deck boards and old style railing and enclosed sunroom.

Palladian window on main stair landing.



Millwork in the front entry hall.