

Chartiers Plantation



- Three bedrooms, expandable to five.
- 2.5 or 3.5 bathrooms.
- Two car integral garage.
- Second floor laundry room
- Exterior basement access bulkhead.
- Four masonry fireplaces.
- Simulated Divided Lite windows in front.
- Watertable with molded shape brick.
- Flemish bond brickwork with white mortar.
- Authentic Williamsburg details and color scheme.
- Brick walks, patio and steps.
- Distinctive 'H' style end-chimneys.



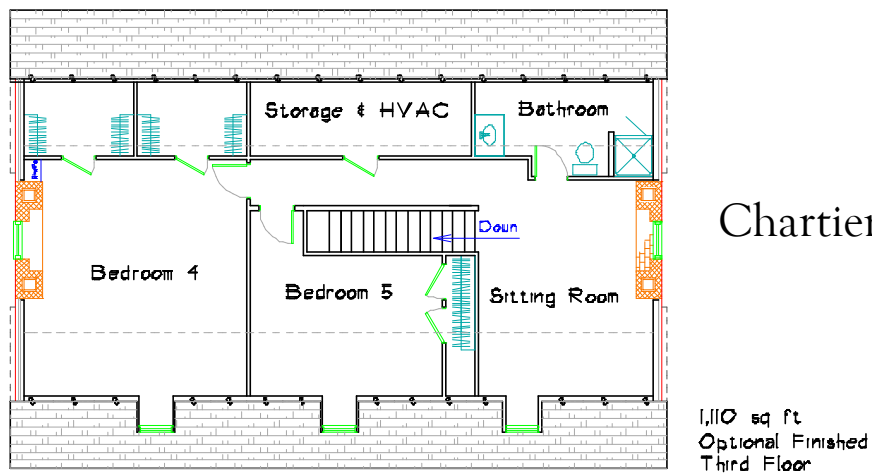
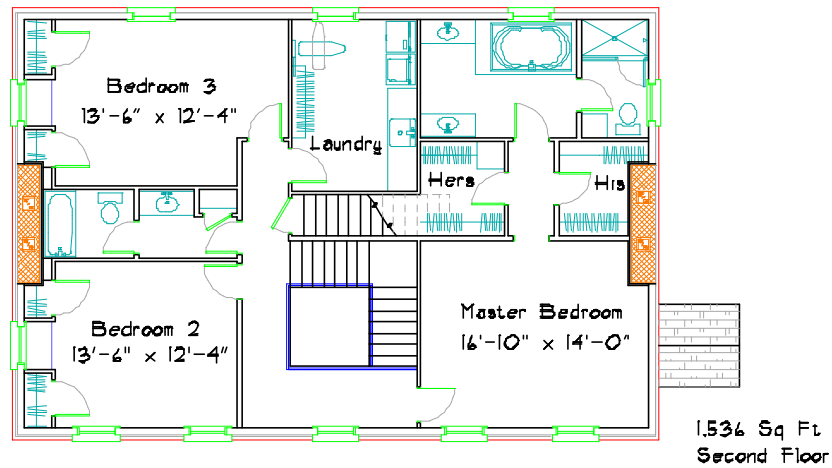
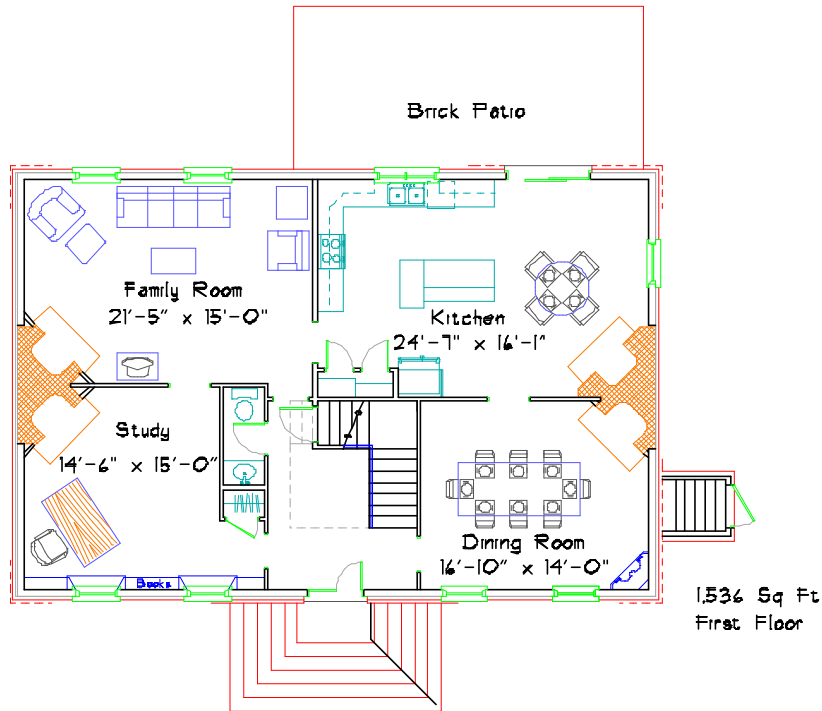
JERRY HORN CONSTRUCTION

COMMERCIAL • INDUSTRIAL • RESIDENTIAL

Call Don Horn at (724) 443-2090 or donhorn@consolidated.net



DON HORN
Housewright



Chartiers Plantation

This plan has 3,072 square feet of finished living space and was designed by Don Horn as a custom home. Finishing the third floor would add 1,110 square feet. This plan can be modified to suit your needs.