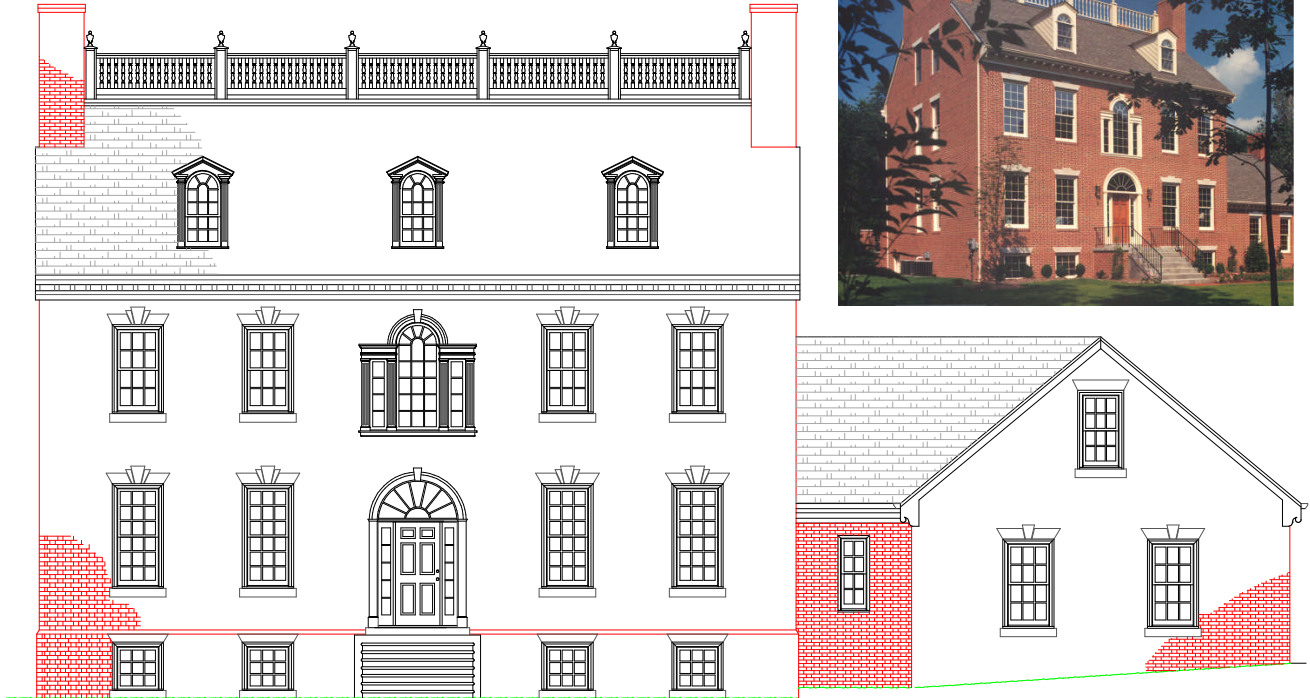


George Read House



- Six bedrooms.
- Three and a half bathrooms.
- Large basement area.
- Three car attached garage.
- First floor laundry room
- Covered rear porch.
- Five masonry fireplaces.
- Simulated Divided Lite wood windows.
- Watertable with molded shape brick.
- Flemish bond brickwork with white mortar.
- Authentic period styling.
- Brick walks and steps.
- Stone window lintels and sills.



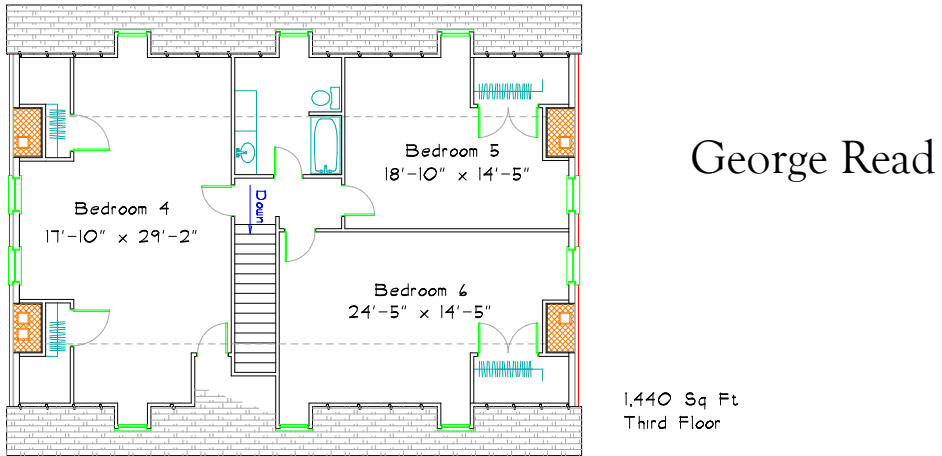
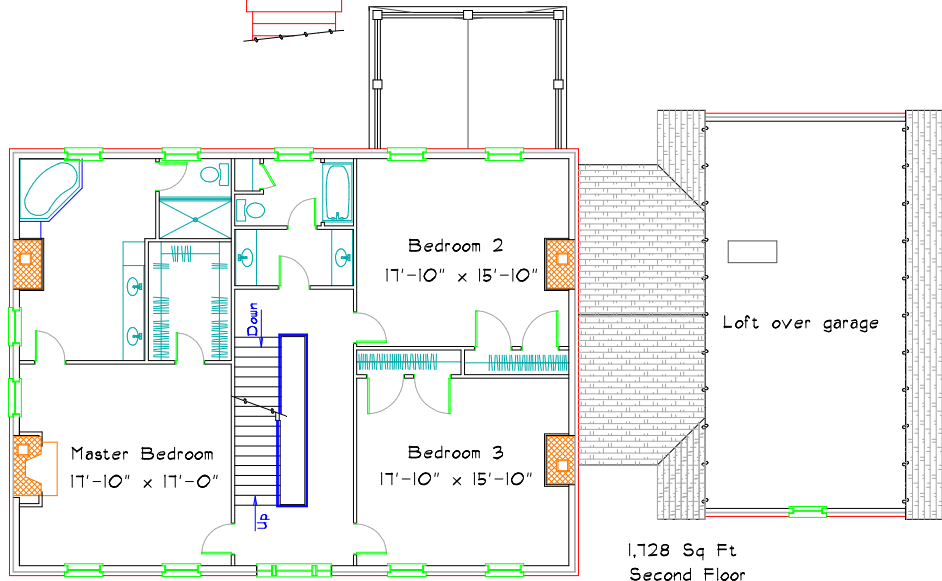
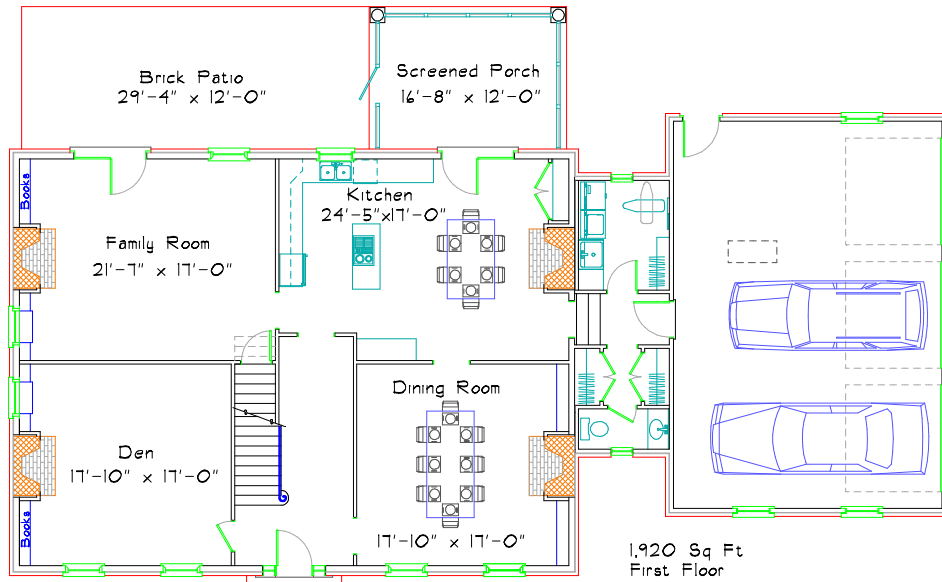
JERRY HORN CONSTRUCTION

COMMERCIAL • INDUSTRIAL • RESIDENTIAL

Call Don Horn at (724) 443-2090 or dhorn@connecttime.net



DON HORN
Housewright



George Read House

This plan has 5,088 square feet of finished living space and was designed by Don Horn as a custom home. Finishing the basement would add at least 1,500 square feet. This plan can be modified to suit your needs.