

Lightfoot House



- Three bedrooms, expandable to 5 bedrooms.
- 2.5 bathrooms, expandable to 3.5.
- Large basement area.
- Optional detached garage.
- Second floor laundry room
- Large center hall entry.
- Palladian window on main stair landing.
- Four masonry fireplaces.
- Simulated Divided Lite windows.
- Watertable with molded shape brick.
- Flemish bond brickwork with white mortar.
- Authentic Williamsburg details and color scheme.
- Brick walks, patio and steps.
- Molded brick front entry surround



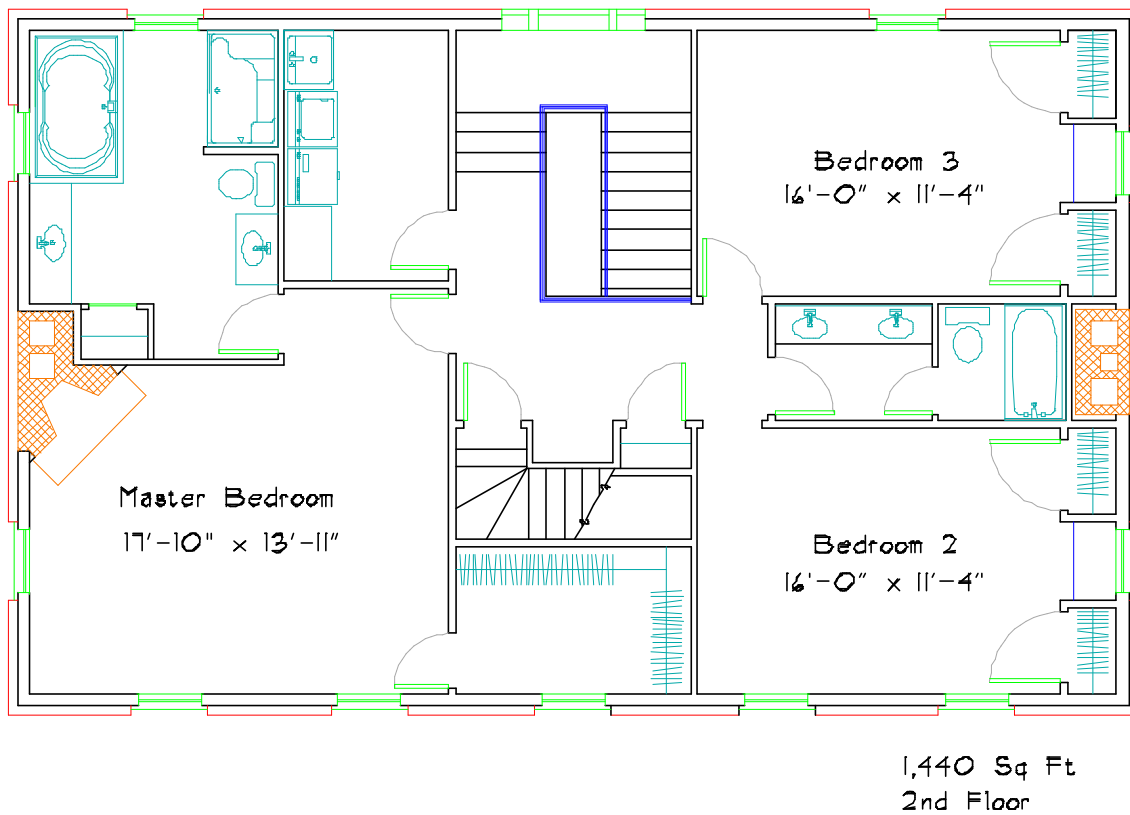
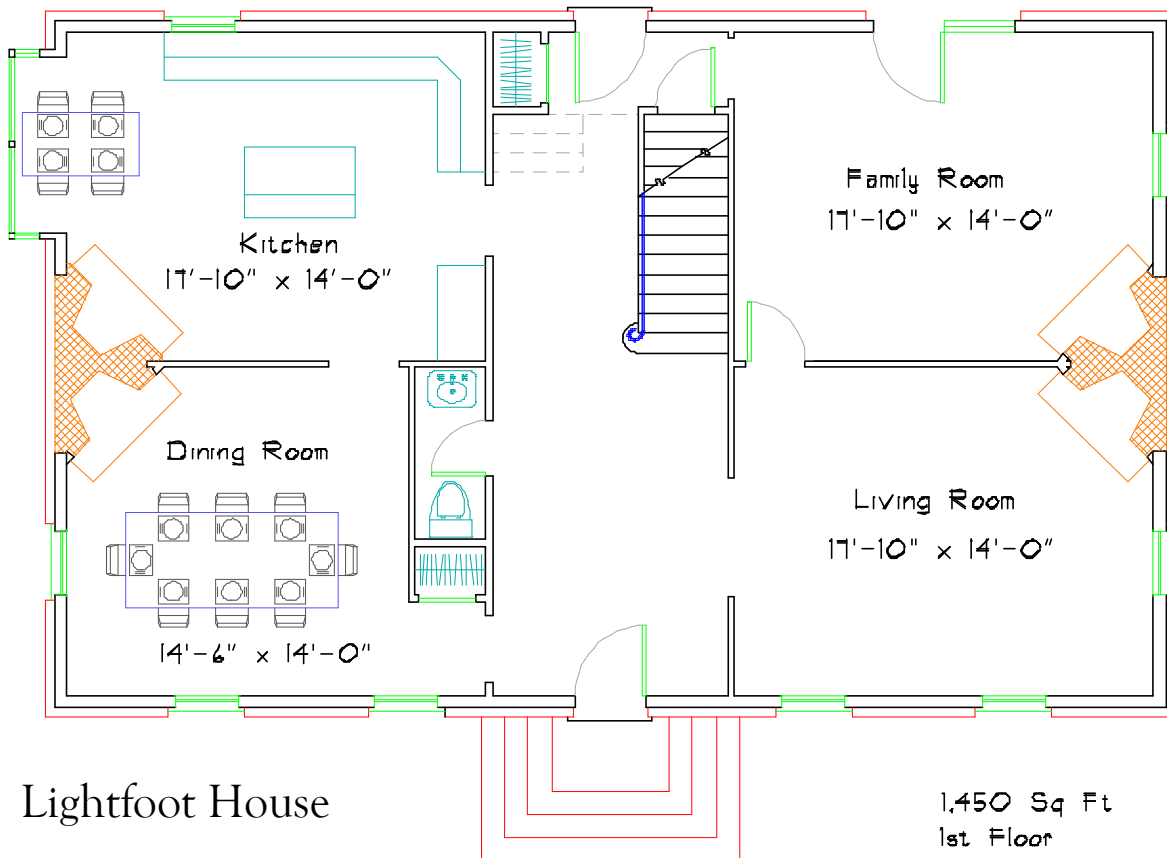
JERRY HORN CONSTRUCTION

COMMERCIAL • INDUSTRIAL • RESIDENTIAL

Call Don Horn at (724) 443-2090 or donhorn@consolidated.net



DON HORN
Housewright



This plan has 2,890 square feet of finished living space and was designed by Don Horn as a custom home. Finishing the third floor with 2 more bedrooms and a bathroom would add at least 665 square feet. This plan can be modified to suit your needs.