

Portsmouth Saltbox



- Four bedrooms.
- 3 and a half bathrooms.
- Large basement area.
- Two car attached garage.
- Second floor laundry room
- Mud room with window seat and storage.
- Beamed kitchen ceiling.
- Wide yellow pine floor boards.
- Three masonry fireplaces.
- Lots of Simulated Divided Lite windows.
- Wood grained fibercement lap siding.
- Massive central brick chimney.
- Authentic New England details and color scheme.
- Brick walks, patio and steps.



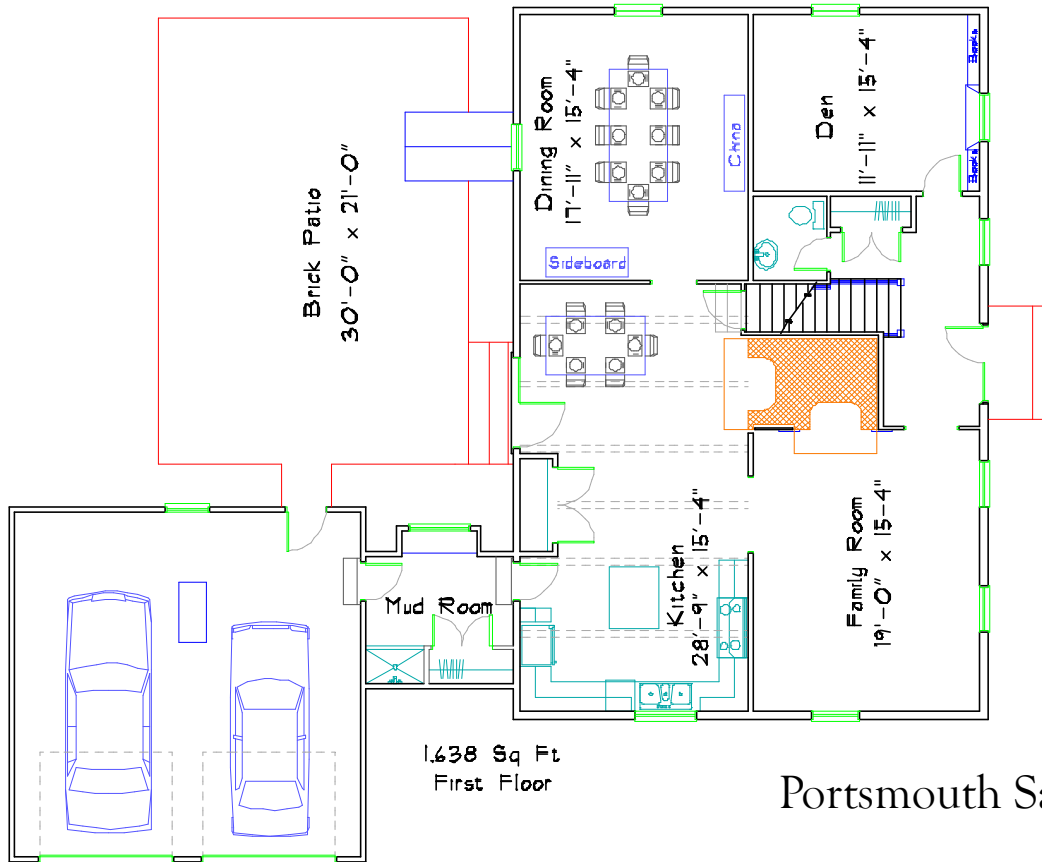
JERRY HORN CONSTRUCTION

COMMERCIAL • INDUSTRIAL • RESIDENTIAL

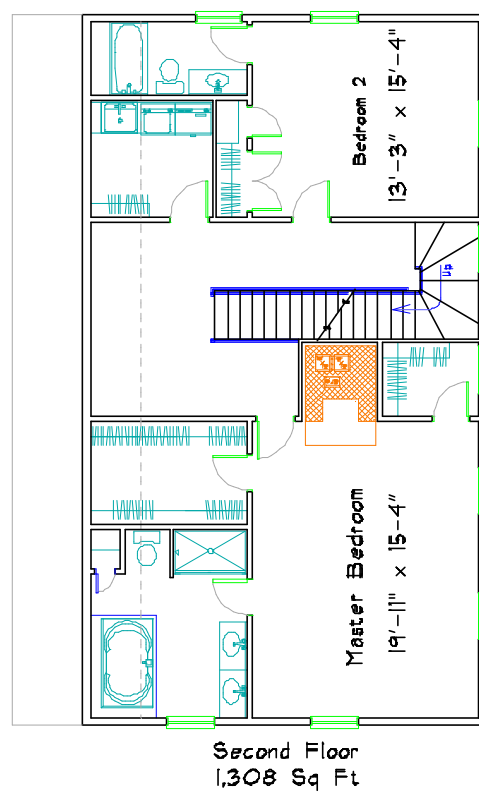
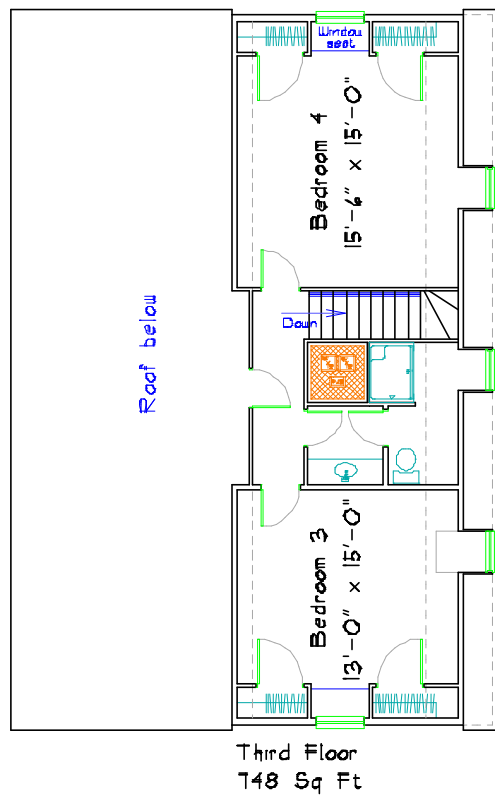
Call Don Horn at (724) 443-2090 or donhorn@consolidated.net



DON HORN
Housewright



Portsmouth Saltbox



This plan has 3,694 square feet of finished living space and was designed by Don Horn as a custom home. Finishing the basement would add at least 1,100 square feet. This plan can be modified to suit your needs.