

Richland Ordinary



- One bedroom, expandable to three.
- Two bathrooms, expandable to three.
- Optional basement finish for a bedroom.
- Two-car integral garage.
- Second floor laundry room
- Rear balcony and covered porch.
- Large entry hall extends front to back with grand staircase with mahogany handrail.
- Family room with full raised-hip paneling.
- Three masonry fireplaces.
- Simulated Divided Lite windows.
- Watertable with molded shape brick.
- Flemish bond brickwork with white mortar.
- Authentic Williamsburg details and color scheme.
- Brick walks, patio and steps.



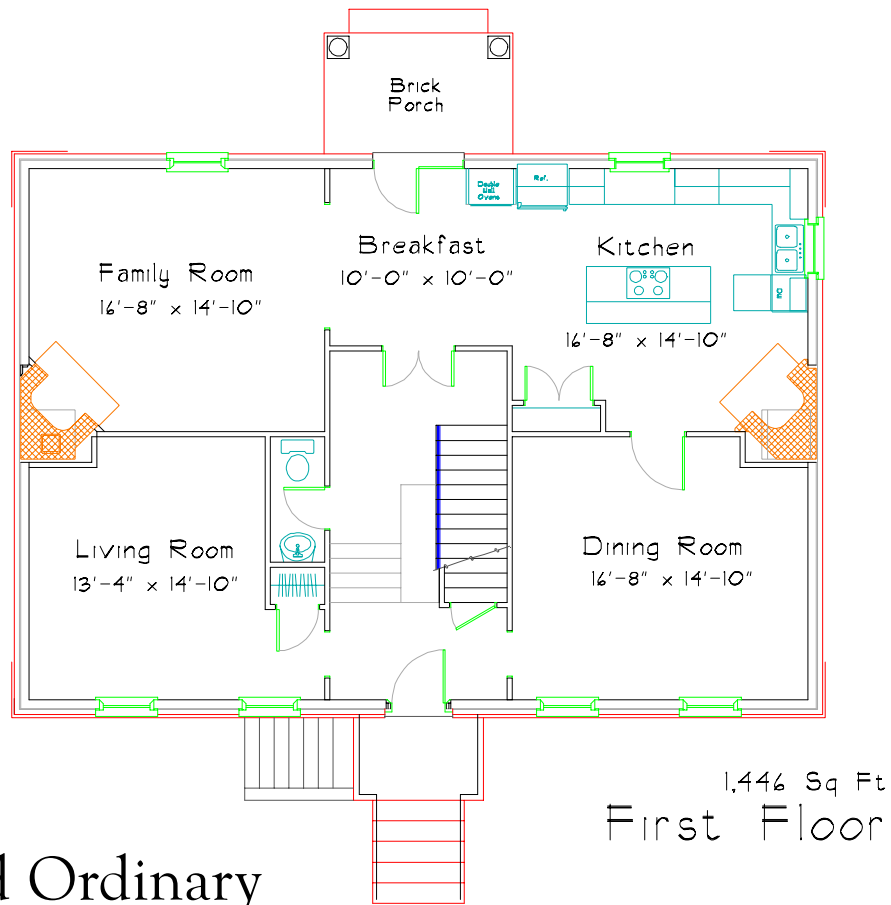
JERRY HORN CONSTRUCTION

COMMERCIAL • INDUSTRIAL • RESIDENTIAL

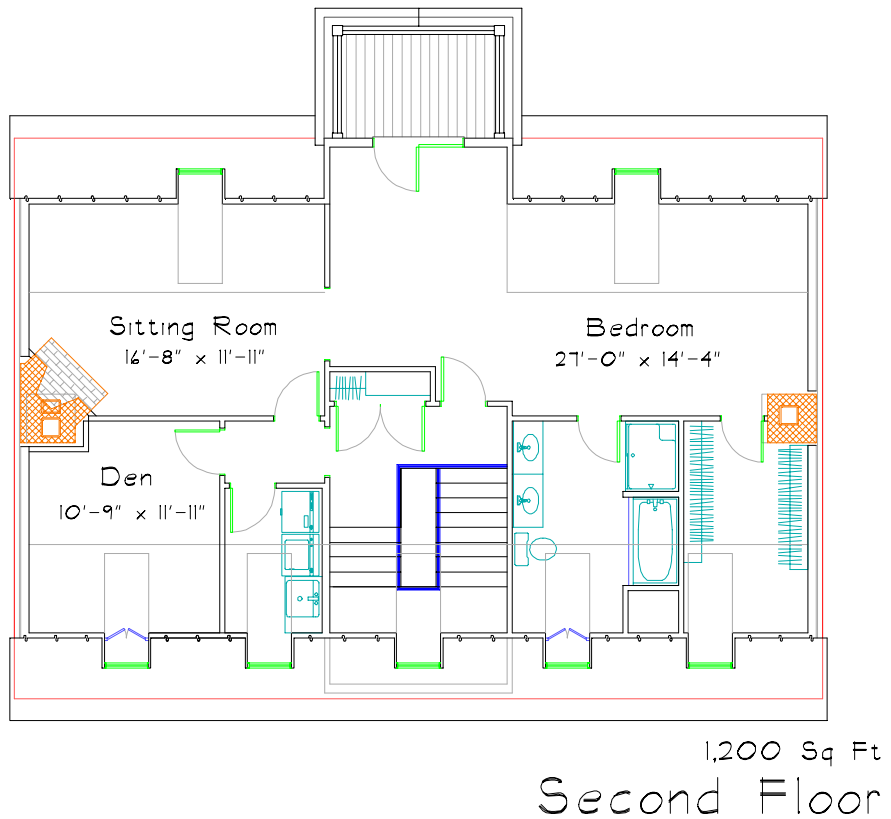
Call Don Horn at (724) 443-2090 or donhorn@consolidated.net



DON HORN
Housewright



Richland Ordinary



This plan has 2,646 square feet of finished living space and was designed by Don Horn as a custom home. Finishing the basement would add about 500 square feet. This plan can be modified to suit your needs.