

Tayloe House



- Three bedrooms.
- 2 and a half bathrooms.
- Full basement.
- Two car attached garage.
- First floor laundry room
- Screened porch in back.
- Formal entry hall with elaborate millwork.
- Two masonry fireplaces.
- Simulated Divided Lite windows.
- Real wood shutters, fibercement siding.
- Flemish bond brickwork with white mortar.
- Authentic Williamsburg details and color scheme.
- Brick walk and patio.
- Cast stone front steps and porch.
- Molded brick privacy wall and picket fence.



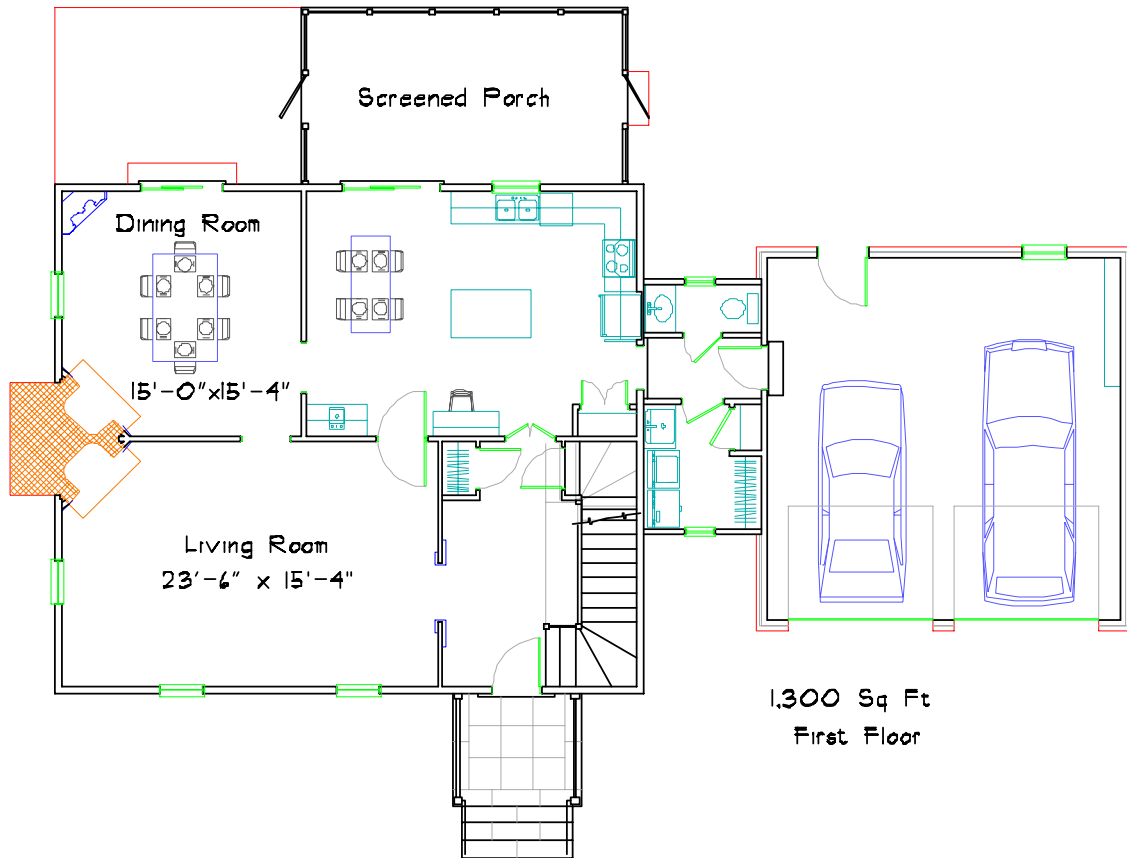
JERRY HORN CONSTRUCTION

COMMERCIAL • INDUSTRIAL • RESIDENTIAL

Call Don Horn at (724) 443-2090 or donhorn@consolidated.net

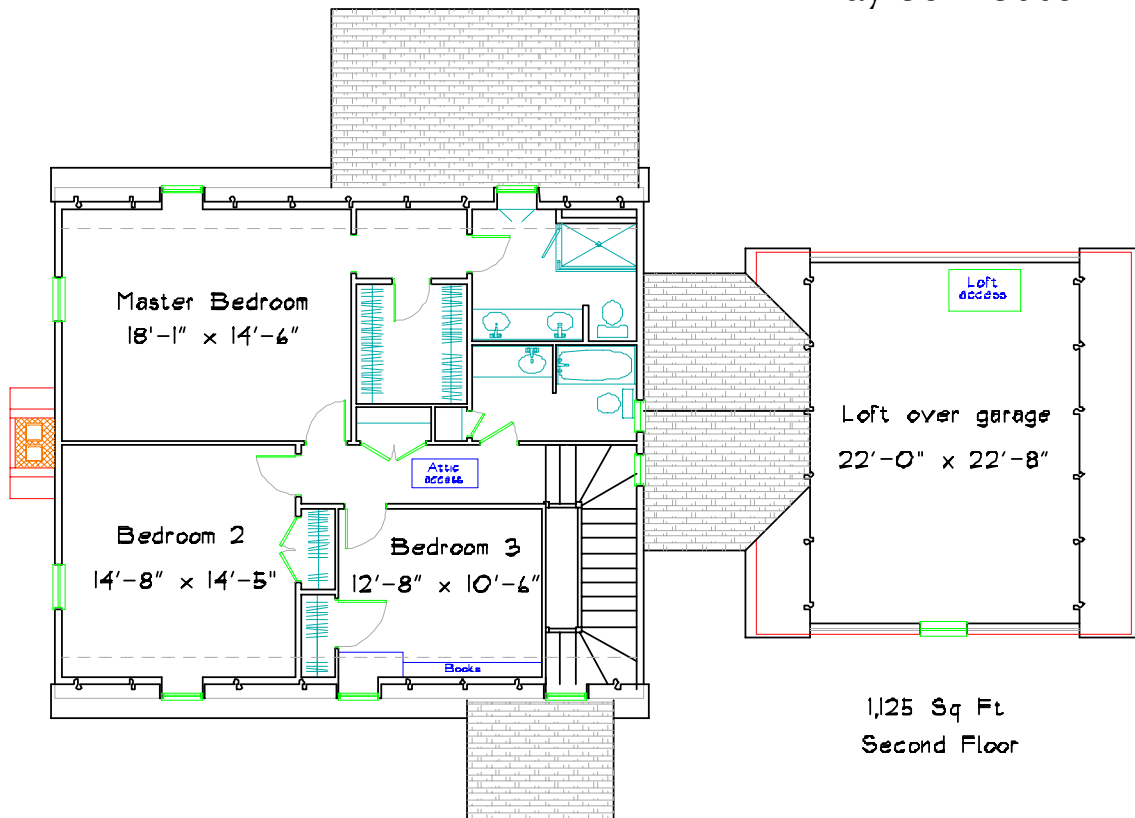


DON HORN
Housewright



1,300 Sq Ft
First Floor

Tayloe House



1,125 Sq Ft
Second Floor

This plan has 2,425 square feet of finished living space and was designed by Don Horn as a custom home. Finishing the basement would add almost 1,000 square feet. This plan can be modified to suit your needs.