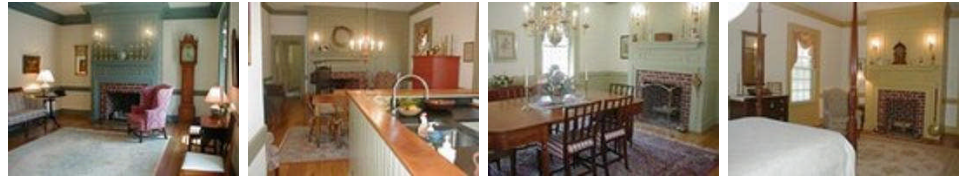


Wayfield



- Five bedrooms.
- Three and a half bathrooms.
- Optional attached or detached garage.
- First floor laundry room
- First floor master bedroom suite.
- Eight masonry fireplaces with gas available.
- Flemish bond brickwork.
- Authentically detailed roof cornice.
- Williamsburg details and color scheme.
- Huge basement area.
- Four tall chimneys and 10 dormers.



JERRY HORN CONSTRUCTION

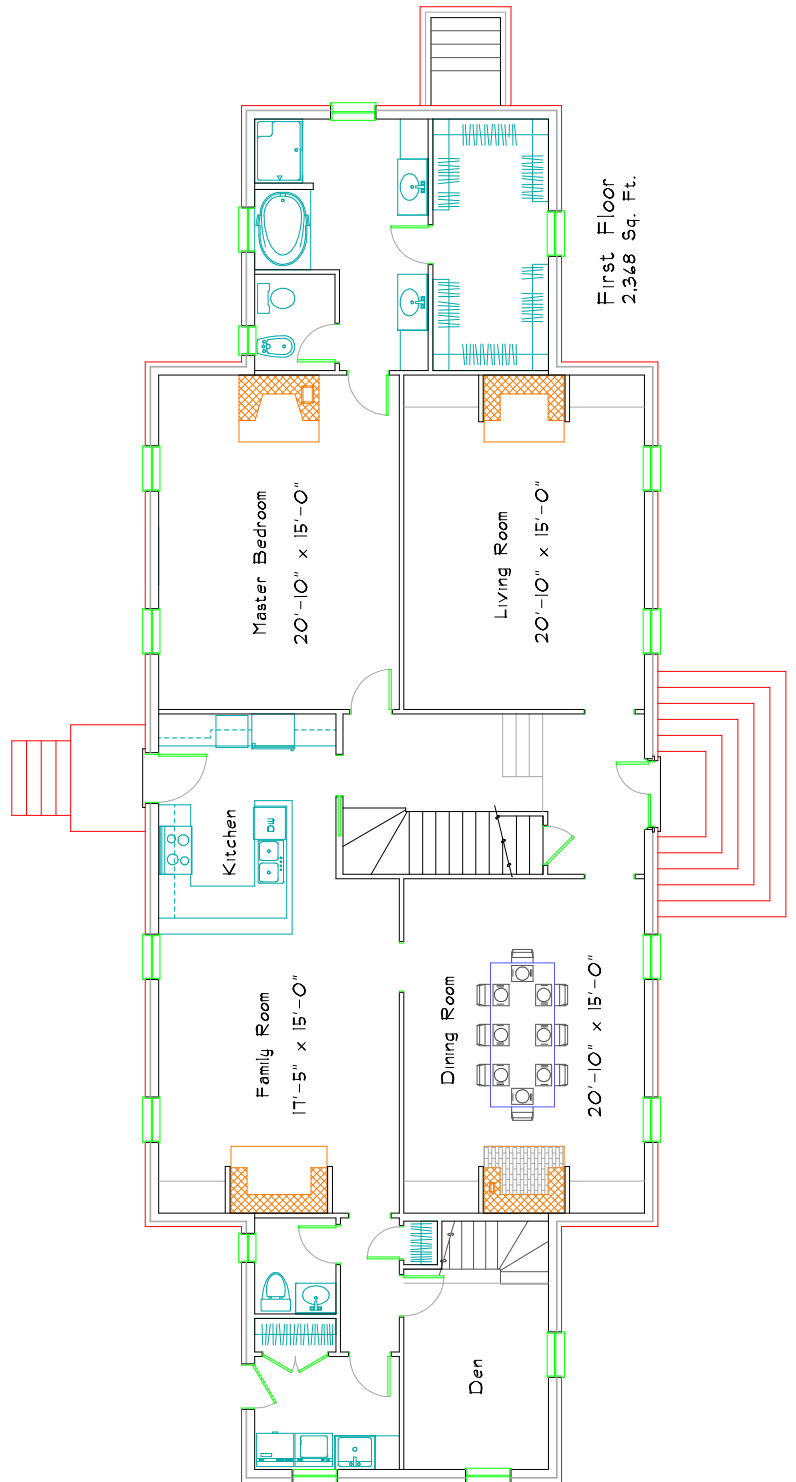
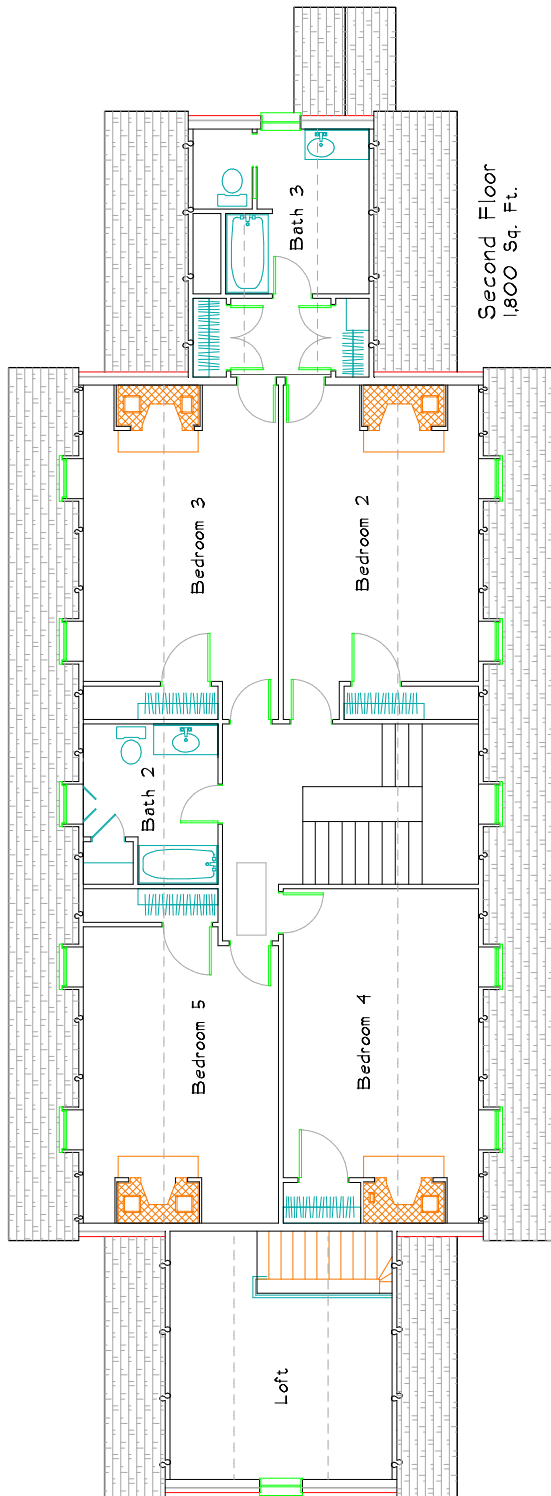
COMMERCIAL • INDUSTRIAL • RESIDENTIAL

Call Don Horn at (724) 443-2090 or donhorn@consolidated.net
www.jerryhornconstruction.com



DON HORN
Housewright

Wayfield



This plan has 4,168 square feet of finished living space and was designed by Don Horn as a custom home. Plan includes over 2,300 square feet in the basement. This plan can be modified to suit your needs.