

Wynstone Manor



- 5 bedrooms.
- 3 and a half bathrooms.
- Large basement area.
- Three car attached garage.
- First floor laundry room
- Walk-out basement.
- Four masonry fireplaces.
- Simulated Divided Lite wood windows.
- Watertable with molded shape brick.
- Flemish bond brickwork with white mortar.
- Authentic Williamsburg period styling.
- Brick walks, patio and steps.



JERRY HORN CONSTRUCTION

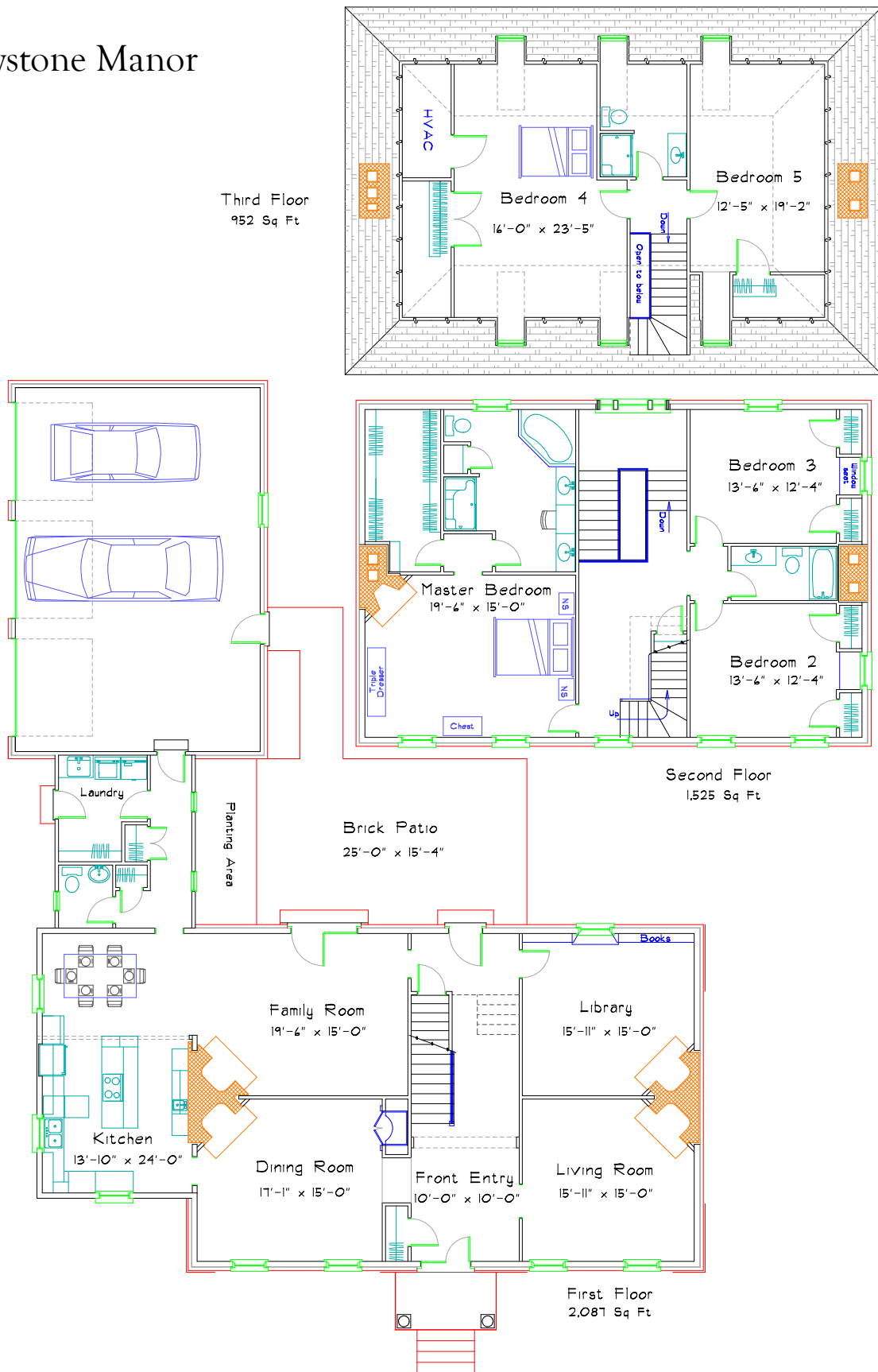
COMMERCIAL • INDUSTRIAL • RESIDENTIAL

Call Don Horn at (724) 443-2090 ordonhorn@consolidated.net



DON HORN
Housewright

Wystone Manor



This plan has 4,564 square feet of finished living space and was designed by Don Horn as a custom home. Finishing the basement would add at least 1,000 square feet. This plan can be modified to suit your needs.