

Geo. Wythe House II



- Four bedrooms.
- Two and a half bathrooms.
- Two-car integral garage.
- Second floor laundry room
- Large entry hall extends front to back with grand staircase with oak handrail.
- Four masonry fireplaces.
- Flemish bond brickwork.
- Authentically detailed roof cornice.
- Williamsburg details and color scheme.
- Possible additional floor space in the attic.
- Compact 44' by 30' size.



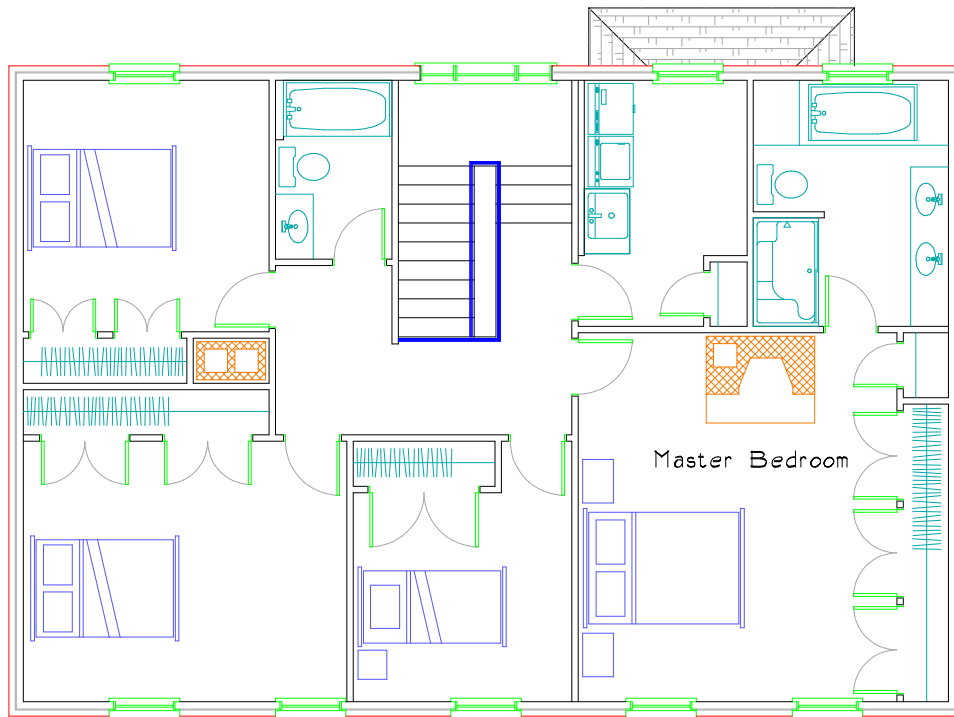
JERRY HORN CONSTRUCTION

COMMERCIAL • INDUSTRIAL • RESIDENTIAL

Call Don Horn at (724) 443-2090 or donhorn@consolidated.net
www.jerryhornconstruction.com

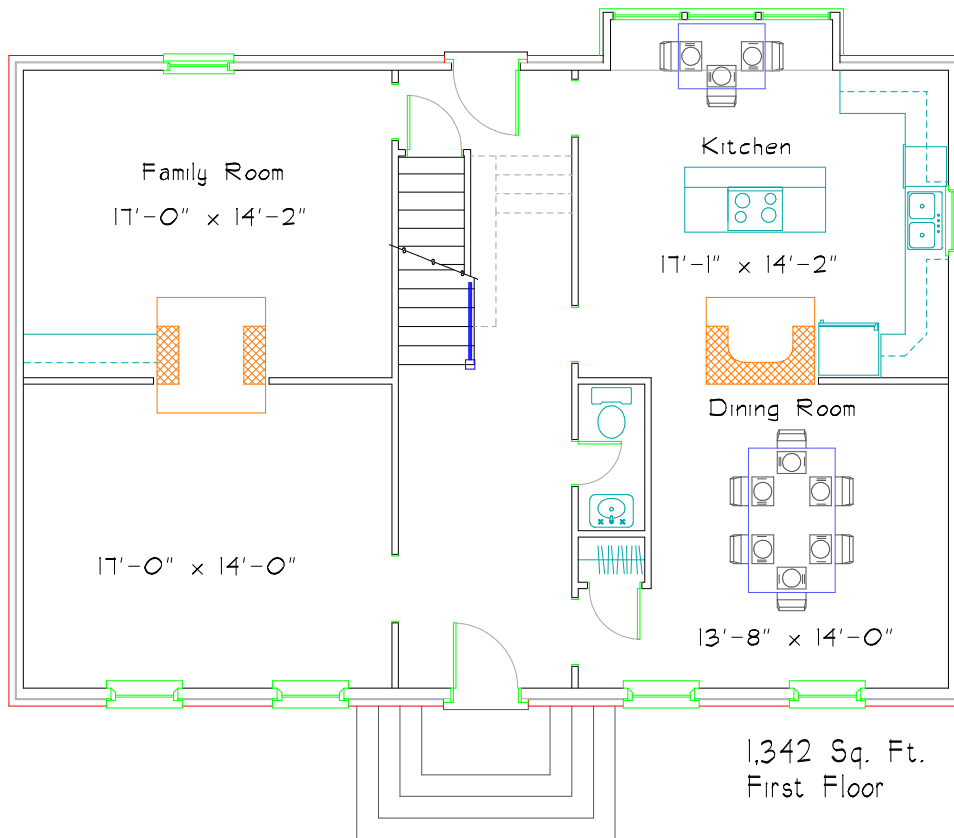


DON HORN
Housewright



1,320 Sq. Ft.
Second Floor

Geo. Wythe House II



1,342 Sq. Ft.
First Floor

This plan has 2,662 square feet of finished living space and was designed by Don Horn as a custom home. Plan includes a 2-car integral garage in the basement. This plan can be modified to suit your needs.