

# Wythe Plantation



- Five or six bedrooms.
- 3 and a half bathrooms.
- Large family room with 48" fireplace.
- Two car integral garage.
- Large second floor laundry room
- Built-in bar and large pantry.
- Formal entry hall with marble tile floor.
- Spacious master suite with fireplace.
- Six masonry fireplaces.
- Decorative molded brick entry surround.
- Watertable with molded shape brick.
- Flemish bond brickwork with white mortar.
- Authentic Williamsburg details and color scheme.
- Brick walks, patio and steps.
- Elaborately detailed chimney caps
- Wood sided wing in the rear.



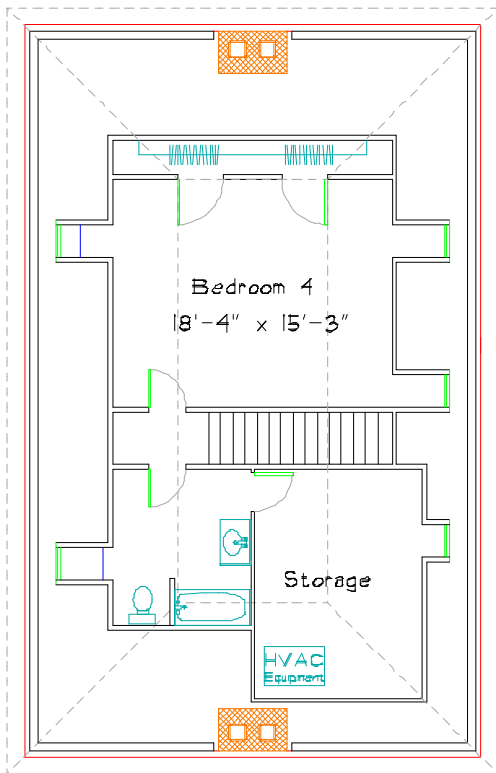
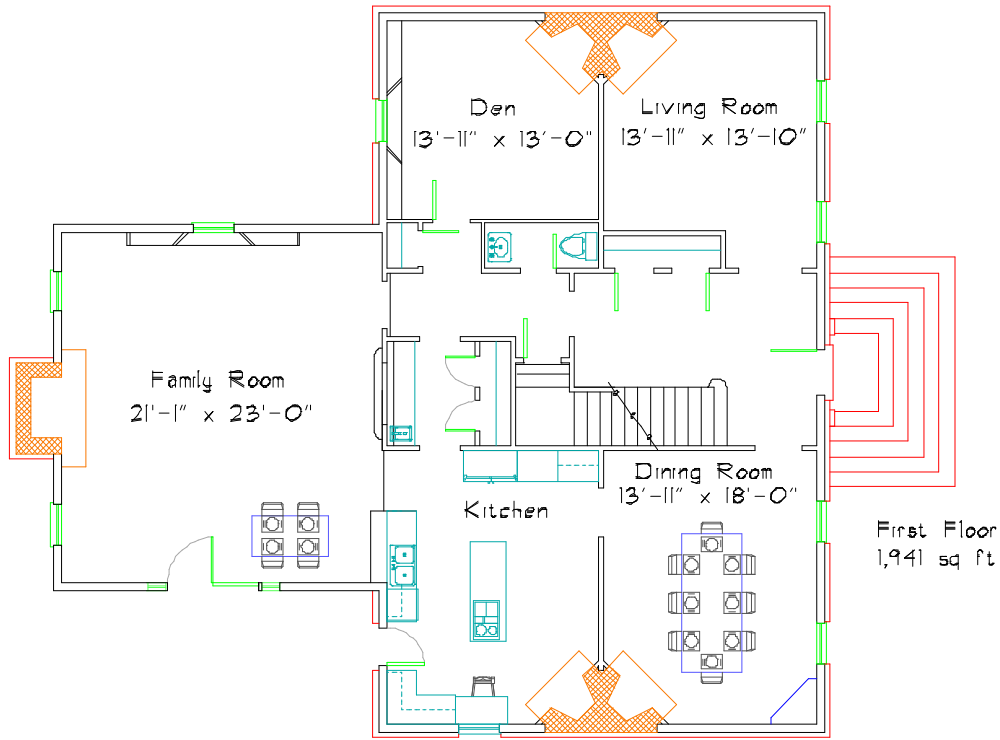
**JERRY HORN CONSTRUCTION**

COMMERCIAL • INDUSTRIAL • RESIDENTIAL

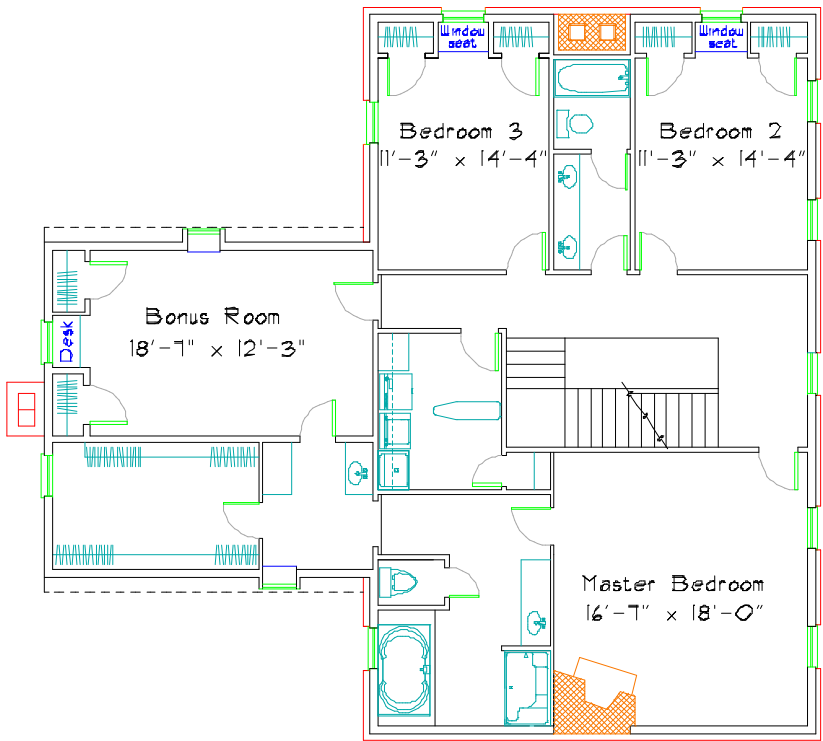
Call Don Horn at (724) 443-2090 or [donhorn@consolidated.net](mailto:donhorn@consolidated.net)



**DON HORN**  
Housewright



Third Floor  
689 sq ft



Second Floor  
1,901 sq ft

## Wythe Plantation House

This plan has 4,531 square feet of finished living space and was designed by Don Horn as a custom home. Finishing the basement would add 270 to 500 square feet. This plan can be modified to suit your needs.