

Evelynton



- 4 bedrooms.
- 3 and a half bathrooms.
- Large basement area.
- Three car attached garage.
- Large second floor laundry room.
- Very large kitchen with sitting area.
- Six masonry fireplaces.
- Simulated Divided Lite windows.
- Watertable with molded shape brick.
- Flemish bond brickwork with white mortar.
- Authentic Williamsburg period styling.
- Brick walks, patio and steps.
- Covered front entry porch.



JERRY HORN CONSTRUCTION

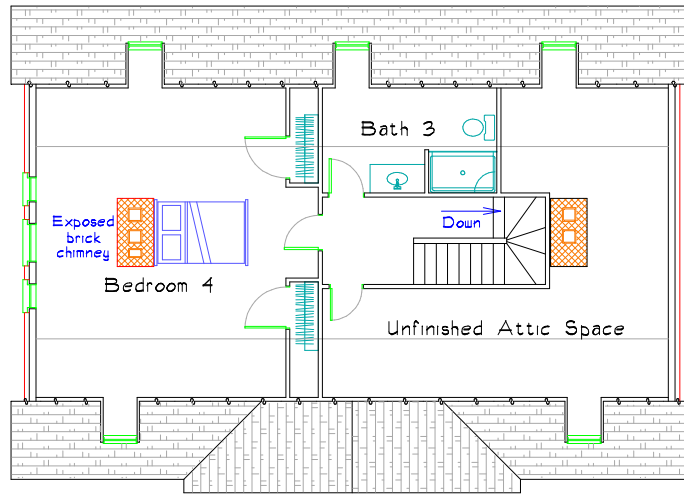
COMMERCIAL • INDUSTRIAL • RESIDENTIAL

Call Don Horn at (724) 443-2090 or donhorn@consolidated.net

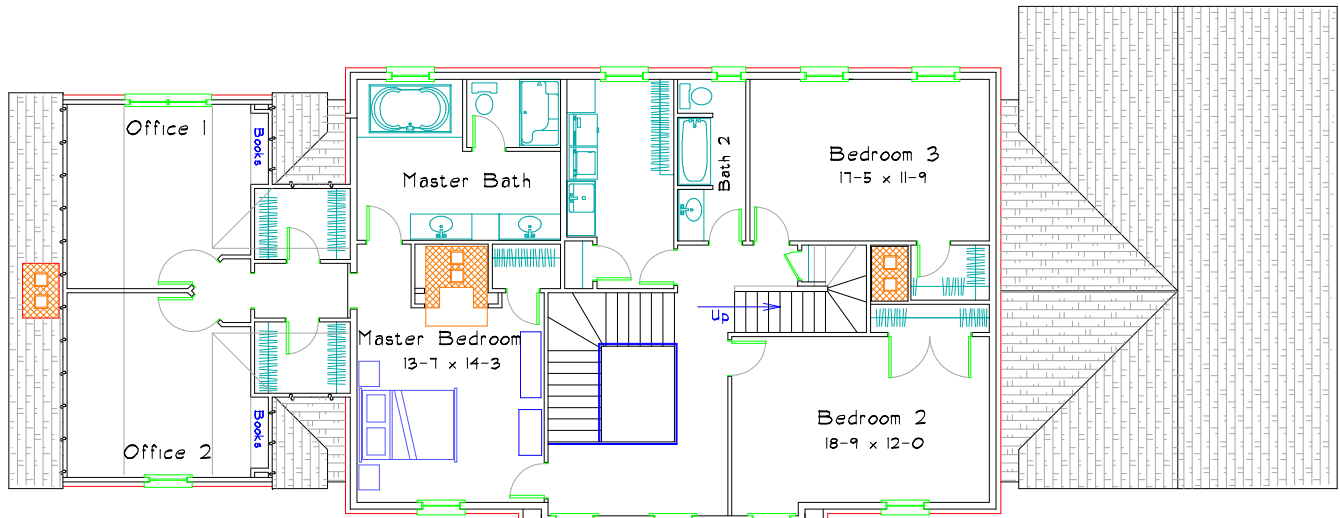


DON HORN
Housewright

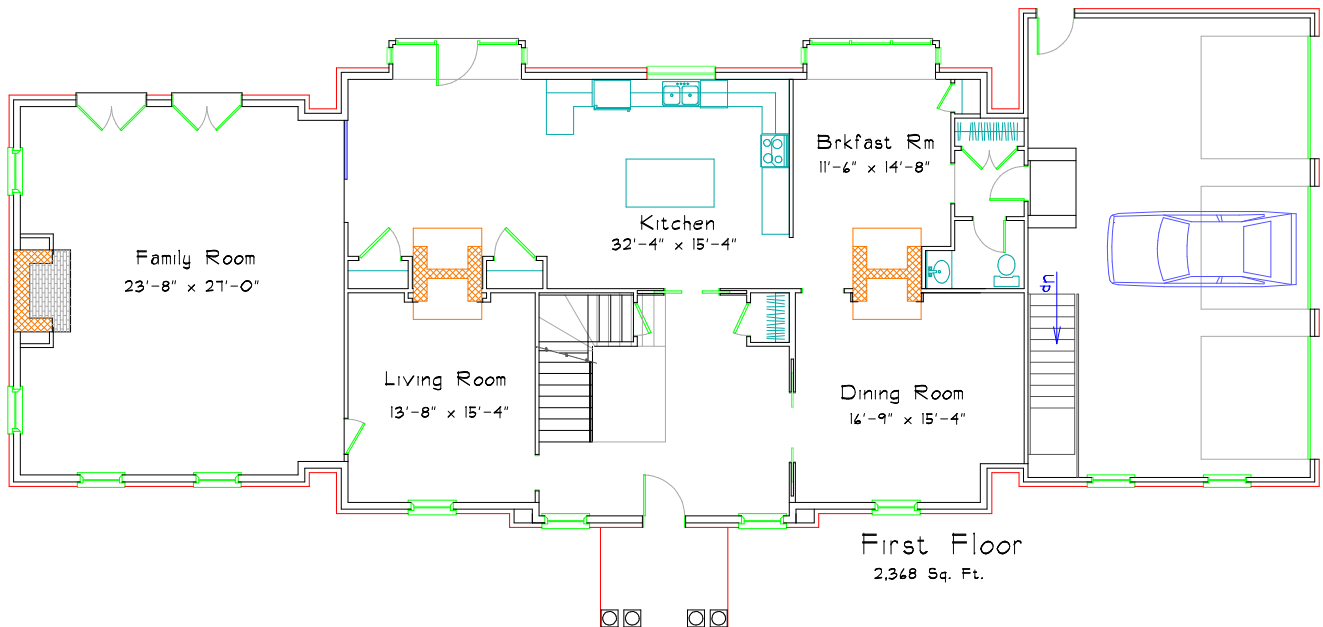
Evelynton



Third Floor
 Total Area = 1,159 sq ft
 Finished Area = 766 sq ft
 Unfinished Area = 393 sq ft



Second Floor
 2,113 Sq. Ft.



First Floor
 2,368 Sq. Ft.

This plan has 5,247 square feet of finished living space and was designed by Don Horn as a custom home. Finishing the basement would add at least 1,000 square feet. This plan can be modified to suit your needs.