

# Sewickley Place



- Five bedrooms.
- Three and a half bathrooms.
- Large storage loft above the garage.
- Three-car attached garage.
- First floor laundry room
- Large rear covered porch with mahogany deck.
- Large entry hall extends front to back with grand staircase and mahogany handrail.
- Four masonry fireplaces.
- Built-in corner china cupboard in dining room.
- Large kitchen with breakfast area
- Stately front covered porch.
- Simulated Divided Lite windows.
- Operating window shutters.
- Detailed custom brickwork.
- Watertable with molded shape brick over a real sandstone veneer foundation.
- Sandstone window lintels and sills.
- Authentic reproduction of a noted Colonial Revival style home in Sewickley.
- Brick walks, patio and steps.



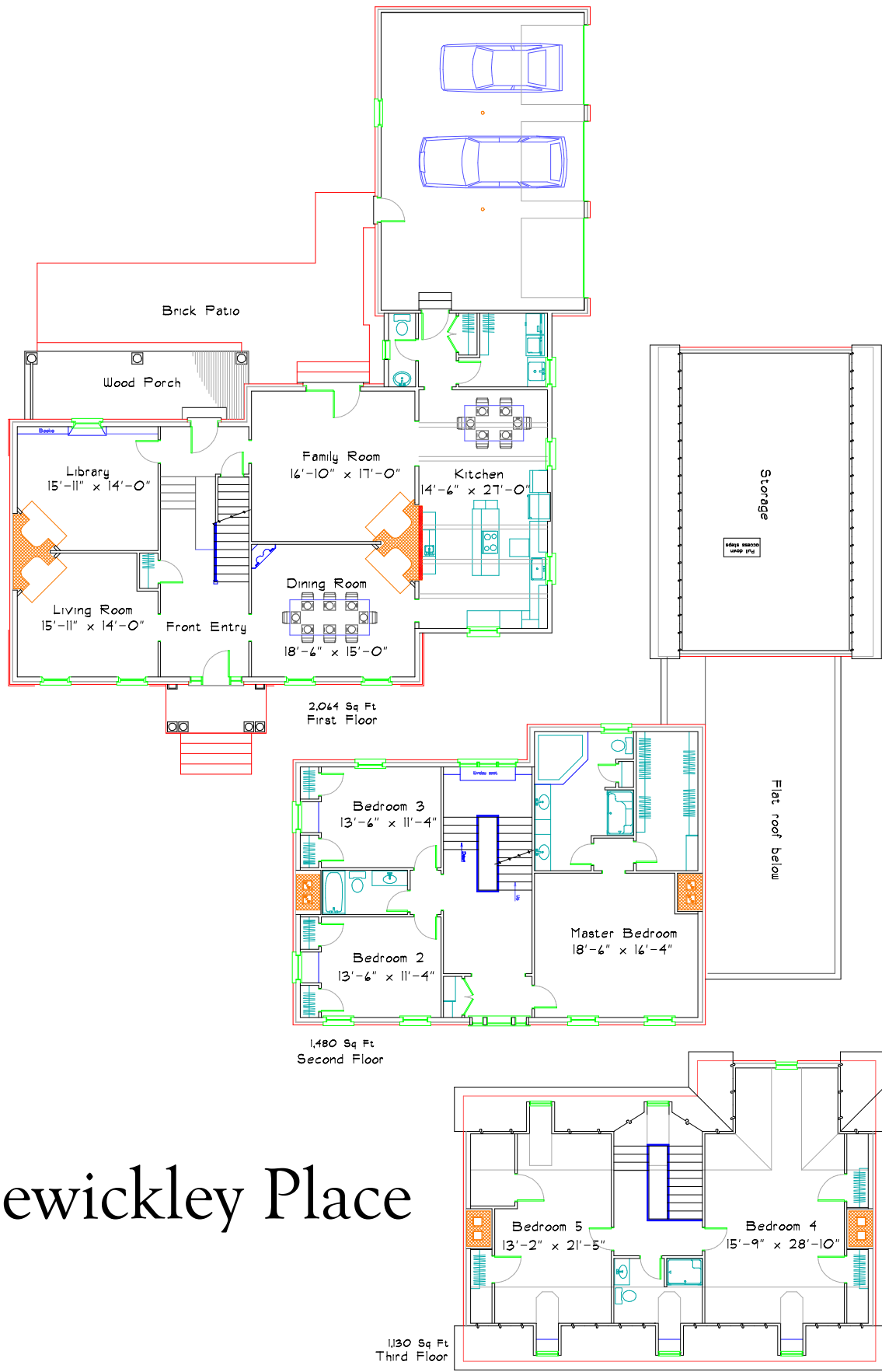
**JERRY HORN CONSTRUCTION**

COMMERCIAL • INDUSTRIAL • RESIDENTIAL

Call Don Horn at (724) 443-2090 or donhorn@consolidated.net



**DON HORN**  
Housewright



# Sewickley Place

This plan has 4,674 square feet of finished living space and was designed by Don Horn as a custom home. Finishing the basement would add 1,200 square feet. This plan can be modified to suit your needs.

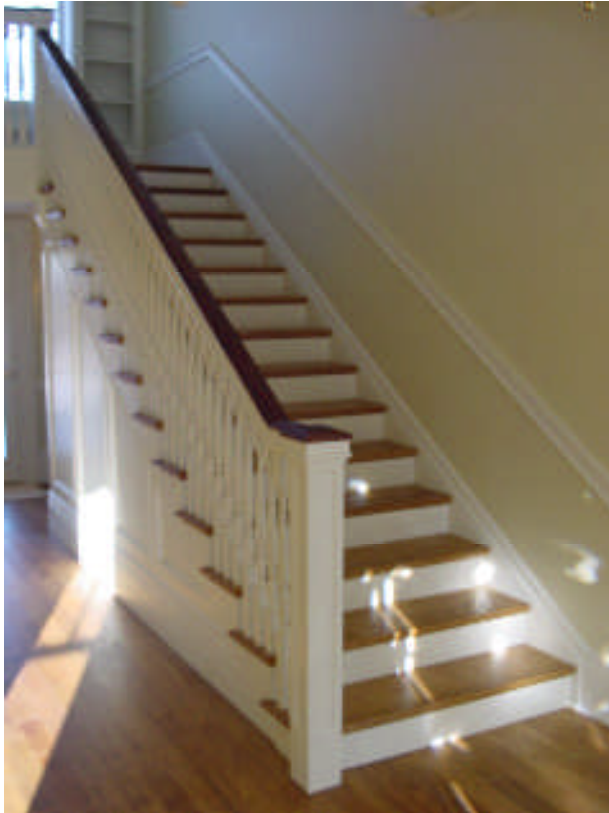
## Details at Sewickley Place



The corner china cupboard, one of many built-ins including bookcases, window seats and fireplace mantles.



Bookcases and window seat in the secluded library with an oak and glass door.



The grand staircase provides access to all three floors.

# More information about Sewickley Place

## 409 Wynstone Drive, Wexford, PA 15090

From I-79 follow Route 910 East towards Wexford.

At stop sign in Wexford (ESB Bank) continue on 910, then take 1st left, onto North Chapel Road. At light, turn right to go North on Route 19.

At the traffic light, turn right onto Wallace Road.

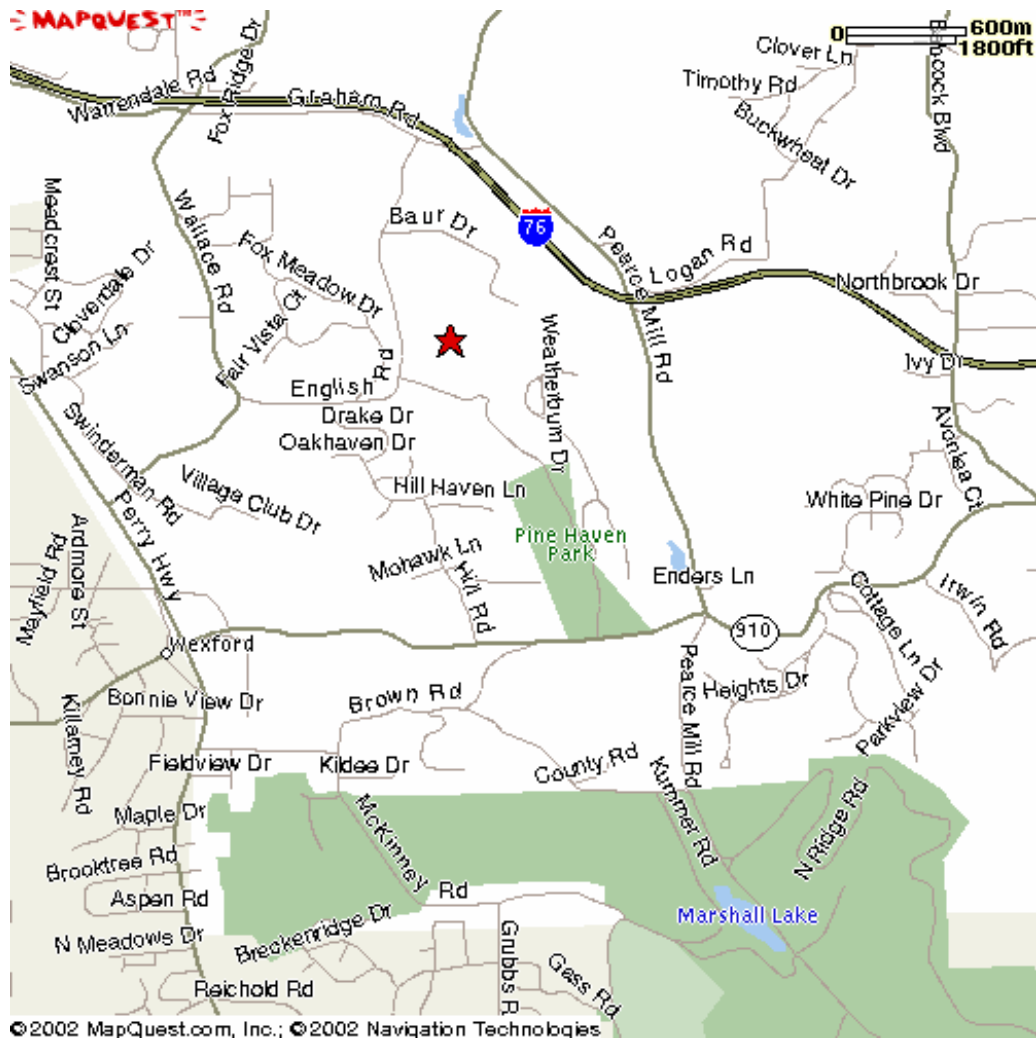
Go 0.6 mile to right onto English Road.

Go 0.4 mile to right onto Wynstone Drive into N. Park Manor, Phase IV.

Lot 405 is on the left as you go up the hill.

From Route 8, follow Route 910 West (Orange Belt).

Go 1.6 miles past the 4-way stop at Babcock Blvd.



Current estimated cost to build this home, plus the cost of the lot and financing:

Actual costs will be affected by changes in the plans and variations in the actual site conditions.